

Gewerbliche- und Industriekühlung (Tiefkühlung)

Commercial and industrial low temperature refrigeration



R-404A

R-507

Kompressoren | Compressors

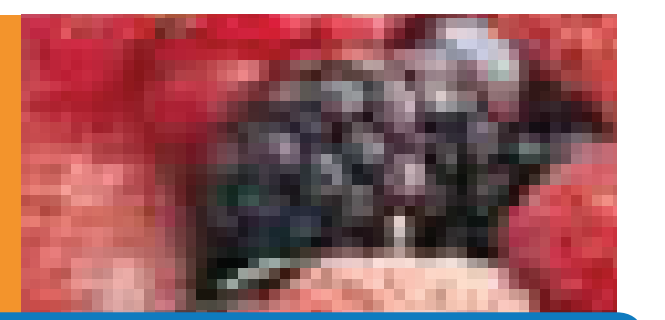
Modelle Models	Hubraum [cm ³] Displacement [cm ³]	Öfüllung [cm ³] Oil charge [cm ³]	Ölsorte Oil type	Expansion Expansion device	Kühlung Cooling	Kälteleistung (Watts) Refrigerating capacity (Watts)						CECOMAF	Aussen Ø For tubing O.D.			Spannung A A Voltage Code					
						-35°C	-30°C	-23.3°C	-20°C	-15°C	-10°C		-25°C	Saug Ø Suction	Druck Ø Disch.	Füll Ø Process	100 V - 50 Hz / 115 V - 60 Hz 1~				
																	Pabs (W)	In (A)	Id (A)	Im (A)	
	THB2360Z	3.6	250	POE	C/V	N	75	106	157	187	241	304	106	6.35 1/4"	4.76 3/16"	6.35 1/4"					
N	THB2378Z	4.2	350	POE	C/V	N	93	130	191	227	289	363	129	6.35 1/4"	4.76 3/16"	6.35 1/4"	CSR Pa : 7.2 Pp : 2.5	175	2.5	16.5	4.2
N	THB2396Z	5.2	350	POE	C/V	F	127	174	251	296	375	466	171	6.35 1/4"	4.76 3/16"	6.35 1/4"					
	AEZ2411Z	7.6	250	POE	C/V	F	128	193	299	362	471	601	200	6.35 1/4"	4.76 3/16"	6.35 1/4"	CSR Pa : 2.9 Pp : 1.4	315	4.7	26.0	7.4
	AEZ2415Z	8.1	350	POE	C/V	F	160	231	355	429	560	712	241	6.35 1/4"	4.76 3/16"	6.35 1/4"	CSR Pa : 4.7 Pp : 1.2	323	4.6	28.0	5.6
	AE1417Z	11.3	350	POE	C	F	161	280	460	557	716	891	300	7.9 5/16"	6.35 1/4"	7.9 5/16"	RSIR Pa : 7.3 Pp : 1.1	401	5.9	37.0	9.6
	CAE2417Z	11.3	350	POE	C/V	F	161	280	460	557	716	891	300	9.5 3/8"	6.35 1/4"	9.5 3/8"	CSR Pa : 4.4 Pp : 1.2	393	4.7	31.0	8.8
	AE1420Z	12.6	350	POE	C	F	232	357	547	654	836	1 047	361	7.9 5/16"	6.35 1/4"	7.9 5/16"					
	CAE2420Z	12.6	350	POE	C/V	F	232	357	547	654	836	1 047	361	9.5 3/8"	6.35 1/4"	9.5 3/8"	CSR Pa : 3.1 Pp : 0.8	468	6.7	35.0	11.3
	CAE2424Z	15.1	350	POE	C/V	F	291	413	630	759	990	1 266	423	9.5 3/8"	6.35 1/4"	9.5 3/8"	CSR Pa : 3.2 Pp : 0.8	565	6.6	39.0	12.2
N	HGA2426Z	9.5	290	PVE	C/V	F		465	630	720	883	1 075	434	9.5 3/8"	7.9 5/16"		CSR Pa : 4.9 Pp : 1.3	453	5.3	30.0	7.8
N	HGA2432Z	11.5	290	PVE	C/V	F		566	766	873	1 066	1 291	529	9.5 3/8"	7.9 5/16"		CSR Pa : 4.7 Pp : 1.1	540	6.2	39.0	9.3
N	HGA2436Z	12.7	290	PVE	C/V	F		610	826	944	1 158	1 408	570	9.5 3/8"	7.9 5/16"		CSR Pa : 3.2 Pp : 1	587	6.7	40.4	11.7
N	HGA2446Z	16.1	290	PVE	C/V	F		789	1 073	1 227	1 507	1 838	739	9.5 3/8"	7.9 5/16"						
	CAJ/TAJ2428Z	15.2	887	POE	C/V	F	240	376	606	742	991	1 269	401	12.7 1/2"	6.35 1/4"	6.35 1/4"	CSR Pa : 4.3 Pp : 0.6	505	7.6	49.0	12.4
	CAJ2432Z	18.3	887	POE	C/V	F	310	478	765	935	1 247	1 593	507	12.7 1/2"	7.9 5/16"	6.35 1/4"	CSR Pa : 3.7 Pp : 0.6	618	7.0	55.0	12.3
	CAJ2440Z	21	887	POE	C/V	F	406	604	936	1 135	1 478	1 886	626	12.7 1/2"	7.9 5/16"	6.35 1/4"					
	CAJ/TAJ2446Z	26.2	887	POE	C/V	F	546	799	1 194	1 443	1 848	2 322	815	12.7 1/2"	7.9 5/16"	6.35 1/4"	CSR Pa : 2.5 Pp : 0.5	926	10.0	61.0	19.4
	CAJ/TAJ2464Z	34.5	887	POE	C/V	F	760	1 096	1 605	1 887	2 412	3 030	1 072	15.9 5/8"	9.5 3/8"	6.35 1/4"	CSR Pa : 1.7 Pp : 0.4	1 230	13.8	82.0	23.0
N	CAJD/TAJD2464Z	36.6	1 774	POE	C/V	F	620	956	1 530	1 870	2 494	3 186	1 014	15.9 5/8"	9.5 3/8"	6.35 1/4"	CSR Pa : 3.7 Pp : 0.6	1 236	14.0	110.0	24.6
N	CAJD/TAJD2492Z	52.4	1 774	POE	C/V	F	1 092	1 598	2 388	2 886	3 696	4 644	1 630	15.9 5/8"	9.5 3/8"	6.35 1/4"	CSR Pa : 2.5 Pp : 0.5	1 852	20.0	122.0	38.8
N	CAJD/TAJD2513Z	69	1 774	POE	C/V	F	1 520	2 192	3 210	3 774	4 824	6 060	2 144	15.9 5/8"	9.5 3/8"	6.35 1/4"	CSR Pa : 1.7 Pp : 0.4	2 460	27.6	164.0	46.0
N	CAJTR/TAJTR2519Z	103.5	2 661	POE	C/V	F	2 280	3 288	4 815	5 661	7 236	9 090	3 216	15.9 5/8"	9.5 3/8"	6.35 1/4"	CSR Pa : 1.7 Pp : 0.4	3 690	41.4	246.0	69.0
	FH/TFH2480Z	53.2	1 625	POE	C/V	F	738	1 319	2 183	2 662	3 551	4 505	1 467	15.9 5/8"	12.7 1/2"	7.9 5/16"					
	FH/TFH2511Z	74.25	1 625	POE	C/V	F	1 380	2 016	3 135	3 796	4 931	6 303	2 055	15.9 5/8"	12.7 1/2"	7.9 5/16"					
	TFHD2516Z	106.4	3 250	POE	C/V	F	1 475	2 638	4 367	5 324	7 100	9 008	2 931	28.6 1 1/8"	15.9 5/8"	7.9 5/16"					
	TFHD2522Z	148.5	3 250	POE	C/V	F	2 760	4 031	6 270	7 592	9 861	12 603	4 109	28.6 1 1/8"	15.9 5/8"	7.9 5/16"					
	TAG2516Z	112.5	1 960	POE	C/V	F	1 765	2 704	4 356	5 335	7 043	9 038	2 883	22.2 7/8"	15.9 5/8"	9.5 3/8"					
	TAG2522Z	134.8	1 960	POE	C/V	F	2 395	3 542	5 522	6 688	8 711	11 062	3 673	28.6 1 1/8"	15.9 5/8"	9.5 3/8"					
	TAGD2532Z	225	3 920	POE	C/V	F	3 526	5 408	8 712	10 690	14 086	18 076	5 766	28.6 1 1/8"	15.9 5/8"	9.5 3/8"					
	TAGD2544Z	269.6	3 920	POE	C/V	F	4 767	7 084	11 044	13 386	17 446	22 125	7 347	34.9 1 3/8"	15.9 5/8"	9.5 3/8"					

N Neuheit | New

 Diese Verflüssigungssätze gibt es auch komplett mit Wetterschutzgehäuse | Also available in "fully-equipped housed" versions

 Diese Verflüssigungssätze gibt es auch in der Silensys® Version | Also available in Silensys® version

Kälteleistung bei nominalen Bedingungen von Tecumseh: Verd. -23.3°C/-10°F - Umgeb. +32°C/+90°F - Sauggas +32°C/+90°F - Verfl. +54.5°C/+130°F - Eingang Ventil +32°C/+90°F
Refrigerating production according Tecumseh rating Conditions: Evap. -23.3°C/-10°F - Amb. +32°C/+90°F - RG +32°C/+90°F - Cond. +54.5°C/+130°F - Enter. valve +32°C/+90°F



Compressors | Kompressoren

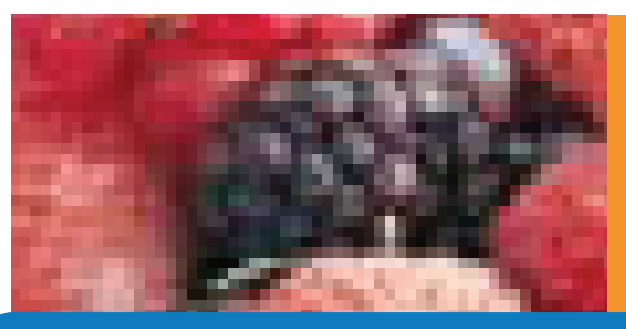
	Modelle Models	Spannung F F Voltage Code				Spannung G G Voltage Code				Spannung K K Voltage Code				Spannung T T Voltage Code							
		220 V / 240 V - 50 Hz 1~				208 V / 220 V - 50 Hz 1~				220 V - 50 Hz / 220 V - 60 Hz 3~				400 V - 50 Hz / 440 V - 60 Hz 3~							
			Pabs (W)	In (A)	Id (A)	Im (A)		Pabs (W)	In (A)	Id (A)	Im (A)		Pabs (W)	In (A)	Id (A)	Im (A)		Pabs (W)	In (A)	Id (A)	Im (A)
	THB2360Z	CSIR Pa : 27.8 Pp : 14.6	151	1.0	7.0	1.6															
N	THB2378Z	CSIR Pa : 24.3 Pp : 12.3	181	1.1	7.7	1.7	CSIR Pa : 24.2 Pp : 10.7	173	1.2	8.0	1.9										
N	THB2396Z	CSIR Pa : 26.7 Pp : 9.6	217	1.4	10.9	2.1															
	AEZ2411Z	CSIR Pa : 30.2 Pp : 6.8	299	2.0	13.0	3.1	CSIR Pa : 18.6 Pp : 5.4	314	2.2	14.0	3.4										
	AEZ2415Z	CSIR Pa : 22.9 Pp : 5.3	321	2.2	14.0	3.5	CSIR Pa : 21 Pp : 4.8	322	2.2	14.0	3.8										
	AE1417Z	RSIR Pa : 32.8 Pp : 5	405	2.6	17.7	4.3	RSIR Pa : 31.5 Pp : 4.4	413	3.1	20.0	4.3										
	CAE2417Z	CSR Pa : 18.4 Pp : 5.5	383	1.9	13.1	3.8	CSR Pa : 18.5 Pp : 4.9	378	2.1	14.0	3.9										
	AE1420Z	RSIR Pa : 28 Pp : 4	488	3.2	20.0	5.0															
	CAE2420Z	CSIR Pa : 19.1 Pp : 4	479	3.1	18.0	4.4	CSIR Pa : 17.1 Pp : 3.7	487	3.3	18.0	5.2										
	CAE2424Z	CSR Pa : 10.4 Pp : 4.3	541	2.5	17.0	4.71	CSR Pa : 10.5 Pp : 3.8	538	2.5	19.0	4.8										
N	HGA2426Z	CSR Pa : 15 Pp : 7.4	439	1.9	3.4	14.7															
N	HGA2432Z	CSR Pa : 12.1 Pp : 5.9	529	2.4	17.0	4.2															
N	HGA2436Z	CSR Pa : 9.7 Pp : 5.4	574	2.6	20.0	5.0															
N	HGA2446Z	CSR Pa : 6.3 Pp : 4	721	3.2	22.0	5.4															
	CAJ/TAJ2428Z	CSIR Pa : 11.1 Pp : 3.2	523	3.3	22.0	5.1	CSIR Pa : 11.1 Pp : 2.7	526	3.6	25.4	6.0						TRI : 21 Ω	502	1.1	9.4	2.1
	CAJ2432Z	CSR Pa : 11.1 Pp : 3.2	591	2.5	21.0	6.3	CSR Pa : 11.1 Pp : 2.7	597	2.7	25.0	5.2						TRI : 21 Ω	568	1.2	9.4	2.2
	CAJ2440Z	CSR Pa : 11.6 Pp : 2.8	713	3.0	27.0	5.7															
	CAJ/TAJ2446Z	CSR Pa : 10.3 Pp : 2.4	886	3.8	29.0	7.9	CSR Pa : 9.1 Pp : 2	896	4.0	32.0	8.3						TRI : 15.5 Ω	873	1.5	13.4	2.9
	CAJ/TAJ2464Z	CSR Pa : 6.5 Pp : 1.6	1 169	5.7	40.0	10.0	CSR Pa : 5.7 Pp : 1.4	1 202	5.6	43.0	13.0						TRI : 11.8 Ω	1 172	2.2	15.9	3.3
N	CAJD/TAJD2464Z	CSR Pa : 11.1 Pp : 3.2	1 182	5.0	42.0	12.6	CSR Pa : 11.1 Pp : 2.7	1 194	5.4	50.0	10.4						TRI : 21 Ω	1 136	2.4	18.8	4.4
N	CAJD/TAJD2492Z	CSR Pa : 10.3 Pp : 2.4	1 772	7.6	58.0	15.8	CSR Pa : 9.1 Pp : 2	1 792	8.0	64.0	16.6						TRI : 15.5 Ω	1 746	3.0	26.8	5.8
N	CAJD/TAJD2513Z	CSR Pa : 6.5 Pp : 1.6	2 338	11.4	80.0	20.0	CSR Pa : 5.7 Pp : 1.4	2 404	11.2	86.0	26.0						TRI : 11.8 Ω	2 344	4.4	31.8	6.6
N	CAJTR/TAJTR2519Z	CSR Pa : 6.5 Pp : 1.6	3 507	17.1	120.0	30.0	CSR Pa : 5.7 Pp : 1.4	3 606	16.8	129.0	39.0						TRI : 11.8 Ω	3 516	6.6	47.7	9.9
	FH/TFH2480Z	CSR Pa : 4.4 Pp : 1	1 760	7.2	68.0	16.0	CSR Pa : 4 Pp : 0.8	1 880	7.7	72.0	19.0	TRI : 1.8 Ω	1 743	5.3	60.0	11.6	TRI : 6 Ω	1 676	2.8	23.0	4.8
	FH/TFH2511Z	CSR Pa : 3.3 Pp : 0.7	2 241	11.5	81.0	24.0	CSR Pa : 3.2 Pp : 0.6	2 331	12.4	93.0	25.0	TRI : 0.7 Ω	2 187	7.1	56.0	13.4	TRI : 5.1 Ω	2 103	3.7	28.0	5.0
	TFHD2516Z											TRI : 1.8 Ω	3 486	10.6	120.0	23.2	TRI : 6 Ω	3 352	5.6	46.0	9.6
	TFHD2522Z											TRI : 0.7 Ω	4 374	14.2	112.0	26.8	TRI : 5.1 Ω	4 205	7.4	56.0	10.0
	TAG2516Z											TRI : 1 Ω	2 986	8.7	95.0	24.7	TRI : 2.15 Ω	2 962	4.64	45.0	9.81
	TAG2522Z											TRI : 0.6 Ω	3 655	11.5	132.0	29.5	TRI : 2.6 Ω	3 589	6.1	63.0	12.5
	TAGD2532Z											TRI : 1 Ω	5 972	17.4	190.0	49.0	TRI : 2.15 Ω	5 924	9.3	90.0	19.6
	TAGD2544Z											TRI : 0.6 Ω	7 310	23.0	264.0	59.0	TRI : 2.6 Ω	7 178	12.2	126.0	25.0

N Neuheit | New

Diese Verflüssigungssätze gibt es auch komplett mit Wetterschutzgehäuse | Also available in "fully-equipped housed" versions

Diese Verflüssigungssätze gibt es auch in der Silensys® Version | Also available in Silensys® version

Kälteleistung bei nominalen Bedingungen von Tecumseh: Verd. -23.3°C/-10°F - Umgeb. +32°C/+90°F - Sauggas +32°C/+90°F - Verfl. +54.5°C/+130°F - Eingang Ventil +32°C/+90°F
Refrigerating production according Tecumseh rating Conditions: Evap. -23.3°C/-10°F - Amb. +32°C/+90°F - RG +32°C/+90°F - Cond. +54.5°C/+130°F - Enter. valve +32°C/+90°F



R-404A
R-507

Kompressoren | Compressors

	Modelle Models	Spannung A A Voltage Code	Spannung F F Voltage Code	Spannung G G Voltage Code	Spannung K K Voltage Code	Spannung T T Voltage Code	Zeichnung Nr. Picture n°	Höhe Height	Befestigung (mm) Mounting plate (mm)		
									Standard Standard	Option 1 Option 1	Option 2 Option 2
	THB2360Z		X				1	169	170x70		
N	THB2378Z	X	X	X			1	172	170x70		
N	THB2396Z		X				1	172	170x70		
	AEZ2411Z	X	X	X			2	186	170x70	165x101.6	
	AEZ2415Z	X	X	X			2	199	170x70	165x101.6	
	AE1417Z	X	X	X			4	212	165x101.6	178x114.3	170x70
	CAE2417Z	X	X	X			6	212	178x114.3	165x101.6	170x70
	AE1420Z		X				4	212	165x101.6	178x114.3	170x70
	CAE2420Z	X	X	X			6	212	178x114.3	165x101.6	170x70
	CAE2424Z	X	X	X			6	215	178x114.3	165x101.6	170x70
N	HGA2426Z	X	X				16	163	203.2x122.2		
N	HGA2432Z	X	X				16	163	203.2x122.2		
N	HGA2436Z	X	X				16	163	203.2x122.2		
N	HGA2446Z		X				16	163	203.2x122.2		
	CAJ/TAJ2428Z	X	X	X		X	8	271	203.2x122.2		
	CAJ2432Z	X	X	X		X	8	271	203.2x122.2		
	CAJ2440Z		X				8	271	203.2x122.2		
	CAJ/TAJ2446Z	X	X	X		X	8	282	203.2x122.2		
	CAJ/TAJ2464Z	X	X	X		X	8	282	203.2x122.2		
N	CAJD/TAJD2464Z	X	X	X		X	CAJ : 19 / TAJ : 20	CAJD : 289 - TAJD 321	590x144.2		
N	CAJD/TAJD2492Z	X	X	X		X	CAJ : 19 / TAJ : 20	CAJD : 300 - TAJD 321	590x144.2		
N	CAJD/TAJD2513Z	X	X	X		X	CAJ : 19 / TAJ : 20	CAJD : 300 - TAJD 321	590x144.2		
N	CAJTR/TAJTR2519Z	X	X	X		X		CAJTR : 300 - TAJTR 300	860x144.2		
	FH2480Z		X	X			10	370	190.5x190.5		
	TFH2480Z				X	X	10	354	190.5x190.5		
	FH2511Z		X	X			10	370	190.5x190.5		
	TFH2511Z				X	X	10	354	190.5x190.5		
	TFHD2516Z				X	X	12	455	660x190.5		
	TFHD2522Z				X	X	12	455	660x190.5		
	TAG2516Z				X		13	381	190.5x190.5		
	TAG2516Z					X	13	368	190.5x190.5		
	TAG2522Z				X	X	13	393	190.5x190.5		
	TAGD2532Z					X	15	560	660x190.5		
	TAGD2532Z				X		15	570	660x190.5		
	TAGD2544Z				X	X	15	575	660x190.5		

N Neuheit | New

Diese Verflüssigungssätze gibt es auch komplett mit Wetterschutzgehäuse | Also available in "fully-equipped housed" versions

Diese Verflüssigungssätze gibt es auch in der Silensys® Version | Also available in Silensys® version

Kälteleistung bei nominalen Bedingungen von Tecumseh: Verd. -23.3°C/-10°F - Umgeb. +32°C/+90°F - Sauggas +32°C/+90°F - Verfl. +54.5°C/+130°F - Eingang Ventil +32°C/+90°F
Refrigerating production according Tecumseh rating Conditions: Evap. -23.3°C/-10°F - Amb. +32°C/+90°F - RG +32°C/+90°F - Cond. +54.5°C/+130°F - Enter. valve +32°C/+90°F

